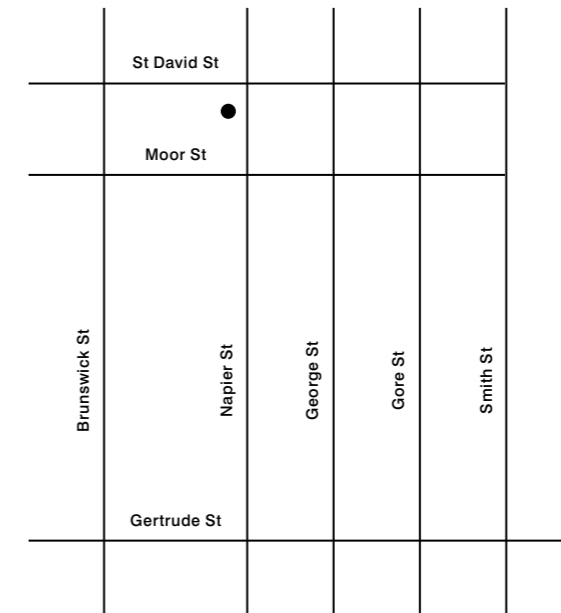




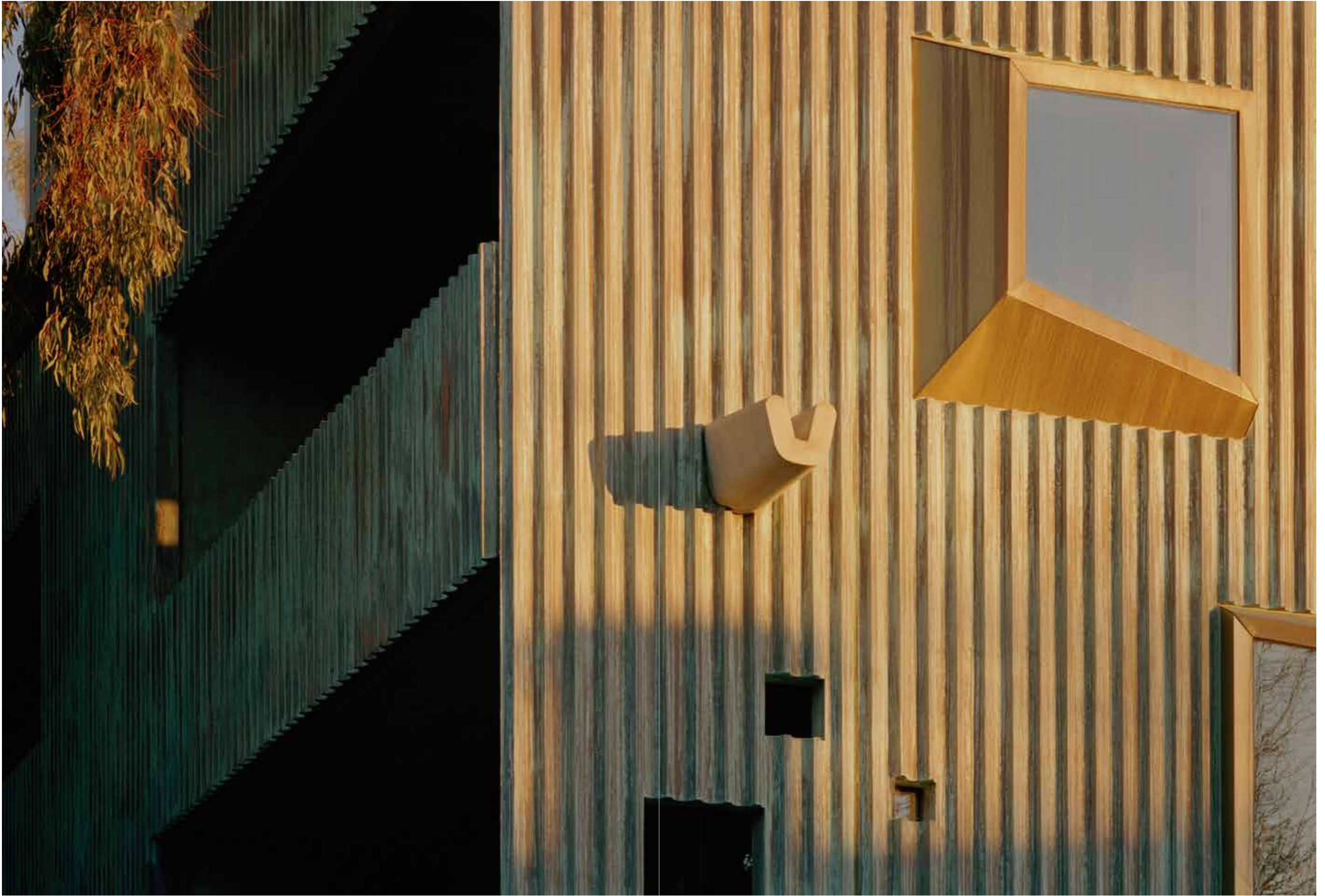
## Napier Street



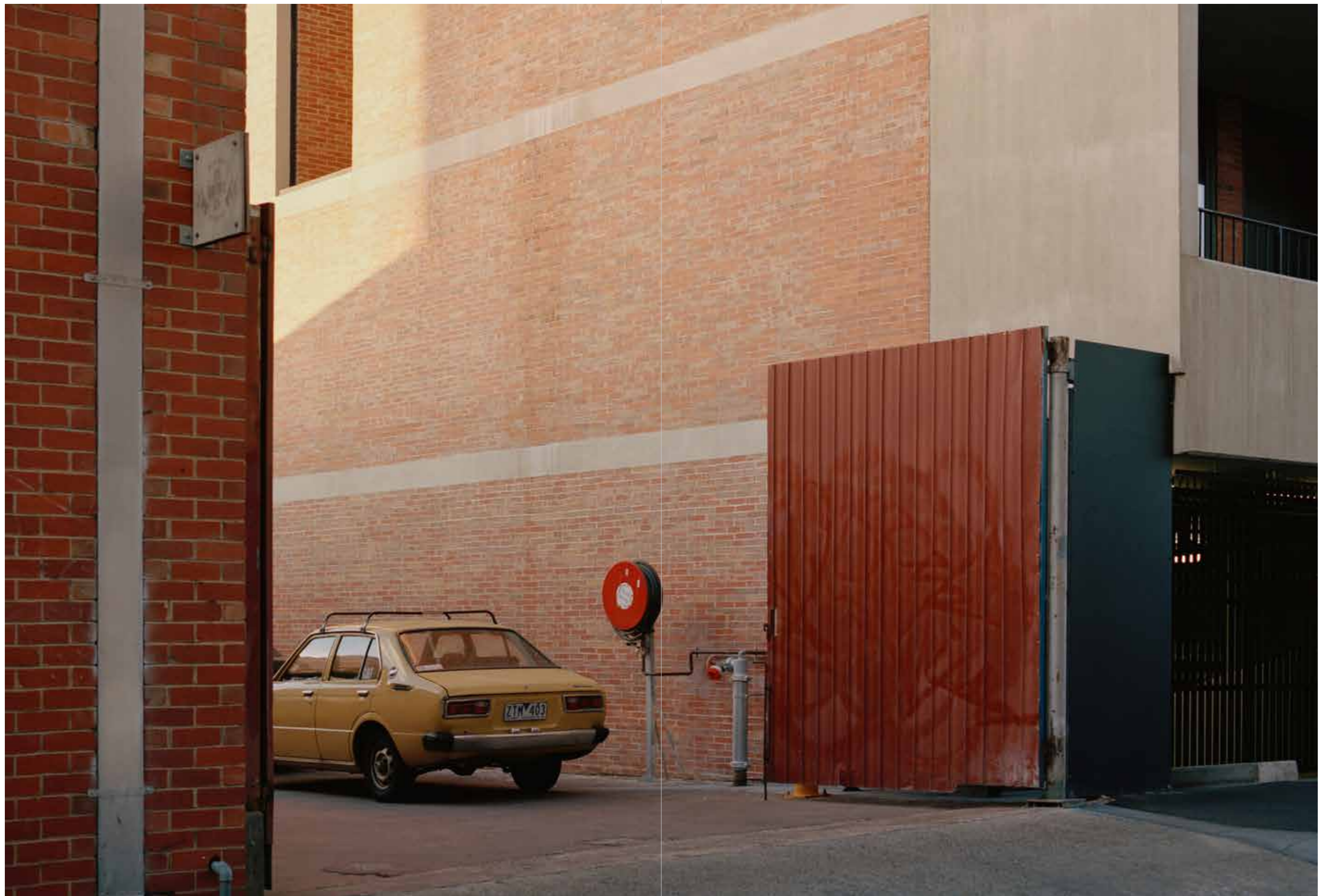
Situated on a leafy stretch within a coveted pocket of Fitzroy, Napier Street is nestled between Gertrude, Smith and Brunswick Streets – a golden triangle long-appreciated for its heritage character and vibrant social milieu.

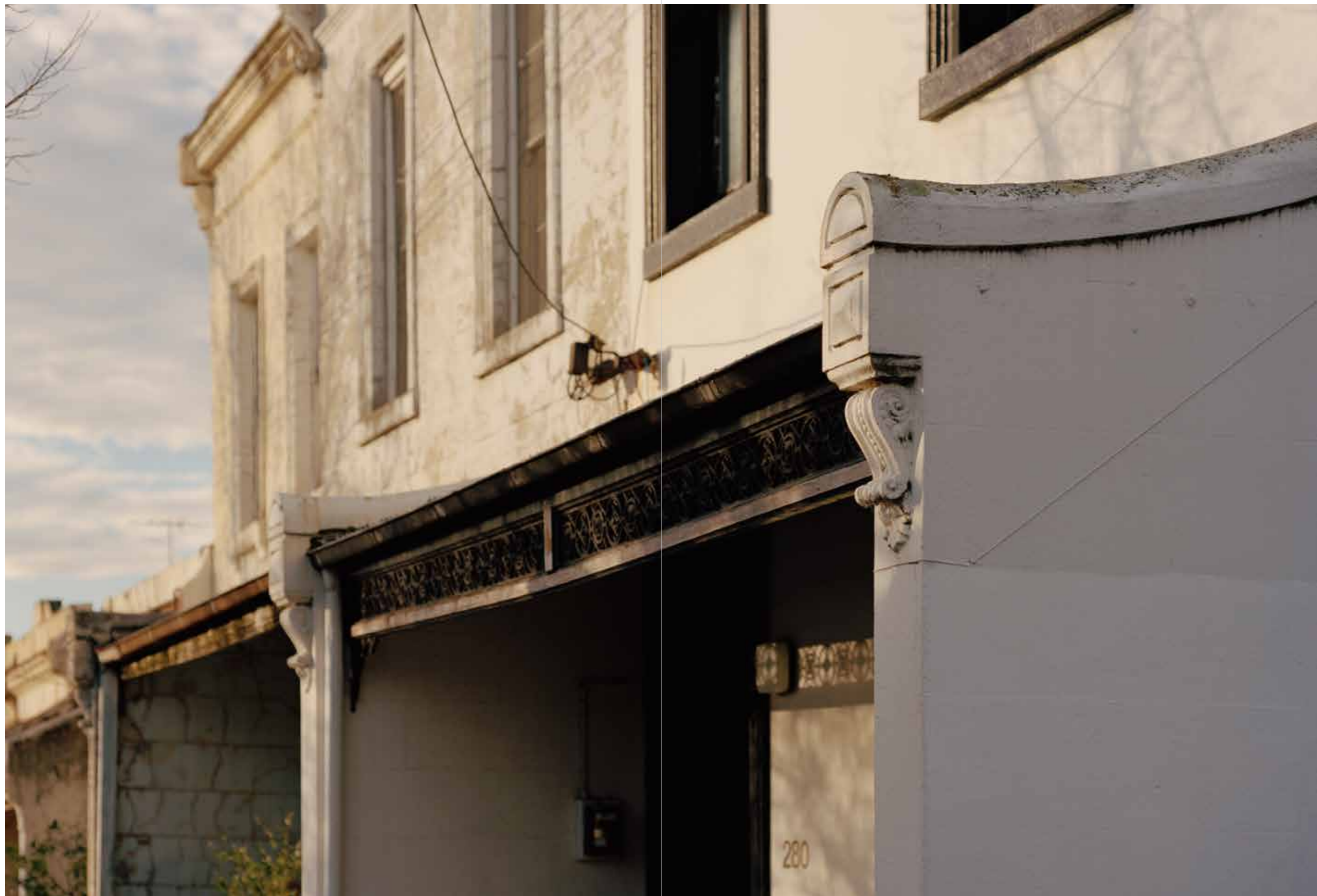
A sweeping canopy of trees lines the quiet street, corner parks are alive with birdsong and calm activity, and the nearby buildings are steeped in rich history. It's these subtle details that make Napier Street an inner-city refuge, where life moves at a gentler pace.

Local photographer Gavin Green captured the street's quiet splendour on an early morning stroll.























Whitlam Place



Fitzroy Town Hall



Napier Street



Terrace Houses



Fitzroy Primary School



Atherton Reserve



Saint Mark's



Napier Street



Whitlam Place

# Milieu